

CBRE

Deals Starting at
\$25.00 Net

THE DUKE ON WELLINGTON

28,465 SQ. FT. AVAILABLE FOR LEASE

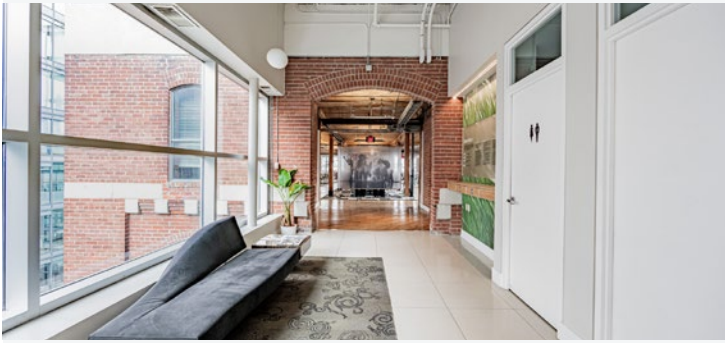
Available Suites

[Click to Explore](#)

Suite	Size	Availability	Images	Plan
600	7,192 SF	Immediate		
501	3,312 SF	Immediate		
200	5,553 SF	Immediate		
204	3,300 SF	Immediate		
202	2,574 SF	Immediate		
Ground	4,118 SF	Dec 1, 2024		
LL	2,416 SF	Dec 1, 2024		
Total	28,465 SF			

Suite 600

- + Penthouse suite available
- + Recently renovated
- + Abundance of natural light
- + Patio facing south overlooking Wellington Street
- + 15 Foot Ceilings
- + Open plan. Ready for tenant fixturing
- + 4 Washrooms – 1 accessible
- + Direct elevator access
- + 2+ parking spaces available



Suite 600

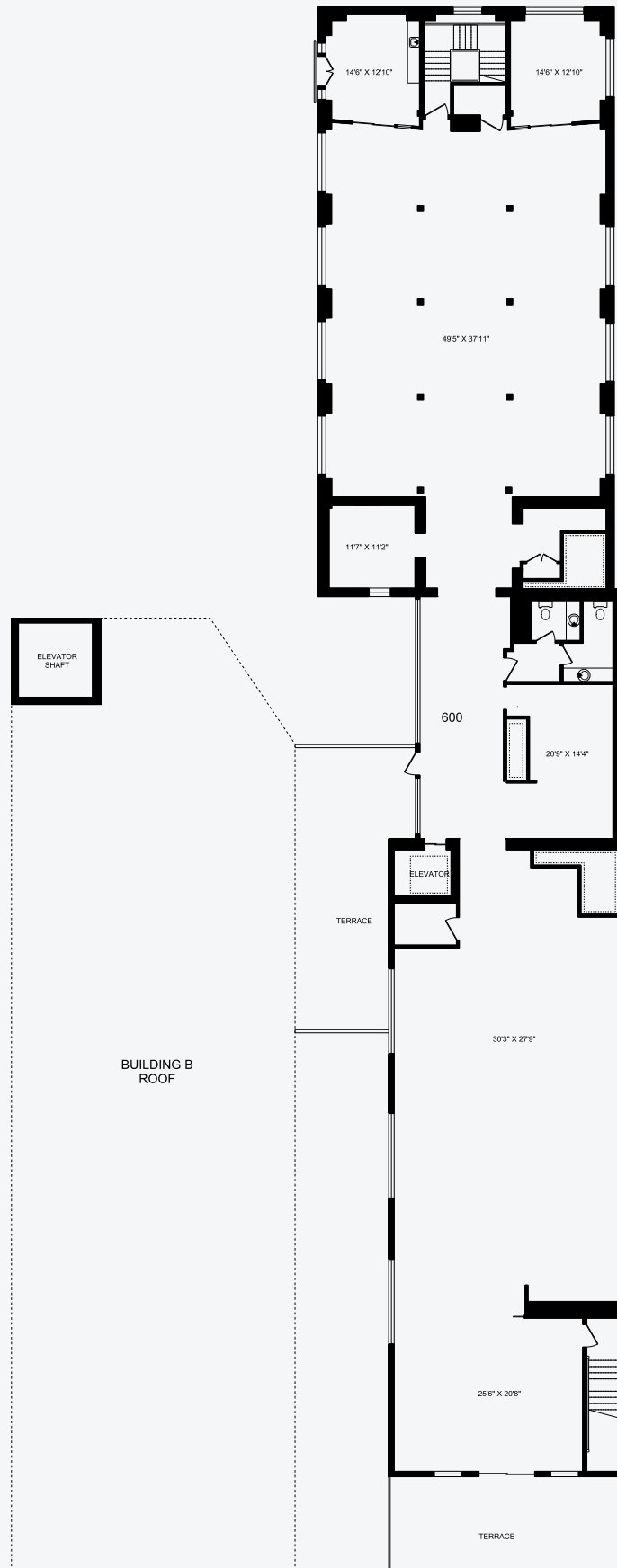
7,192 sq. ft.

Available Immediate

Net Rent Contact Listing Agents

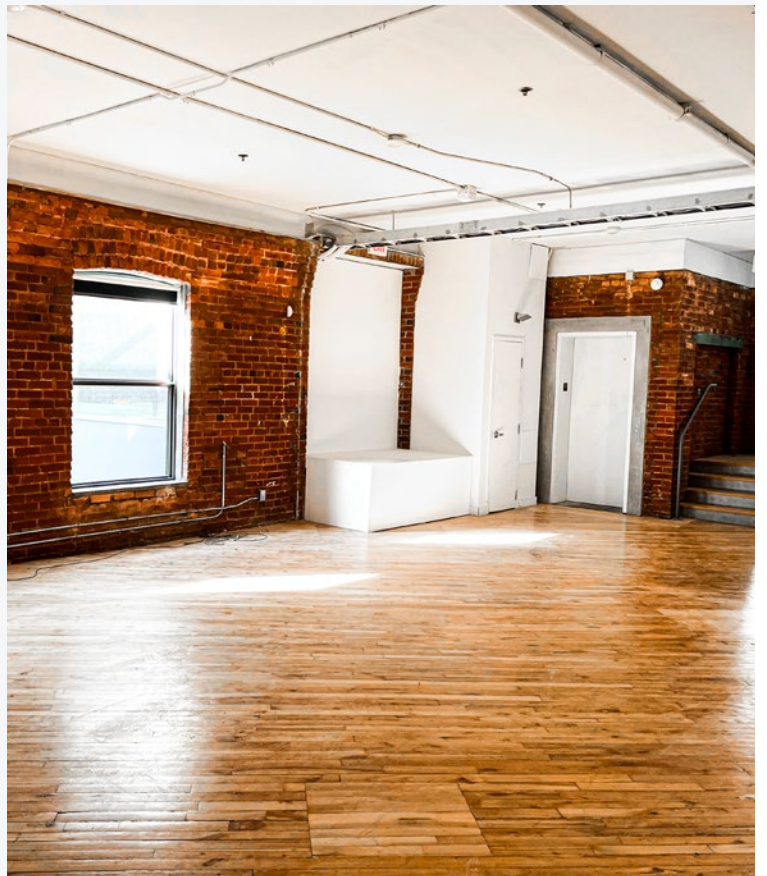
Additional Rent (2024 est.) \$16.50 per sq. ft. (Hydro included, Janitorial excluded)

Term Flexible



Suite 501

- + Direct elevator access
- + Abundance of natural light
- + Recently renovated
- + Built out with kitchen and open plan. Ready for tenant buildout.



Suite 501

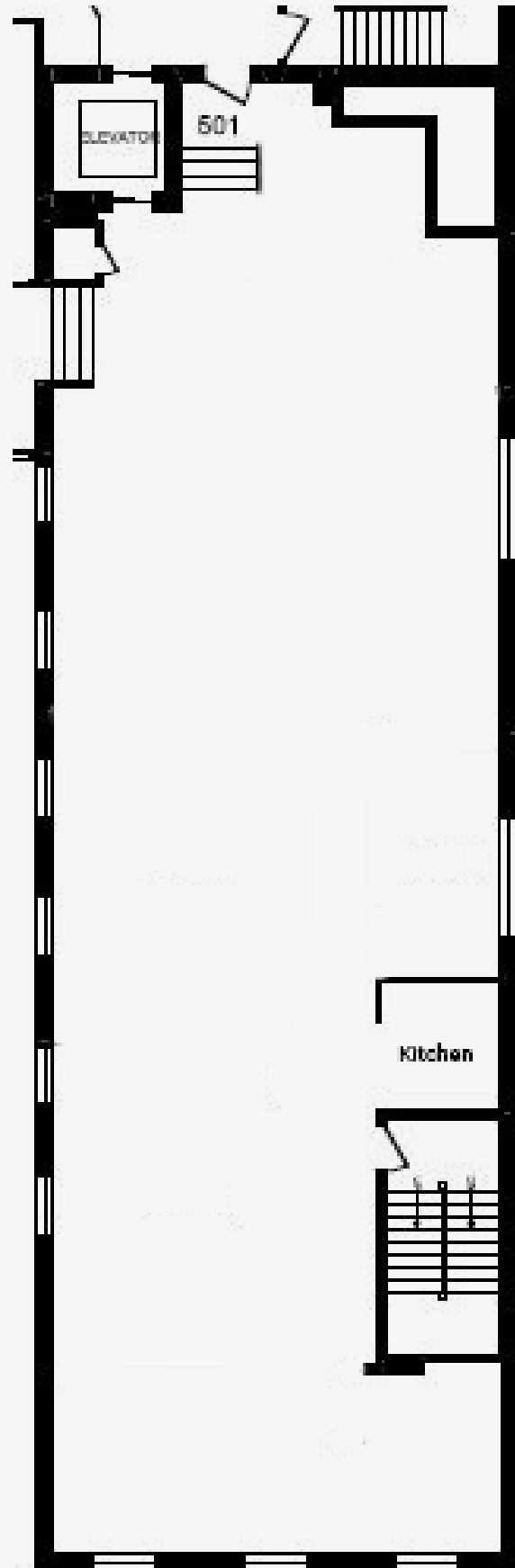
3,312 sq. ft.

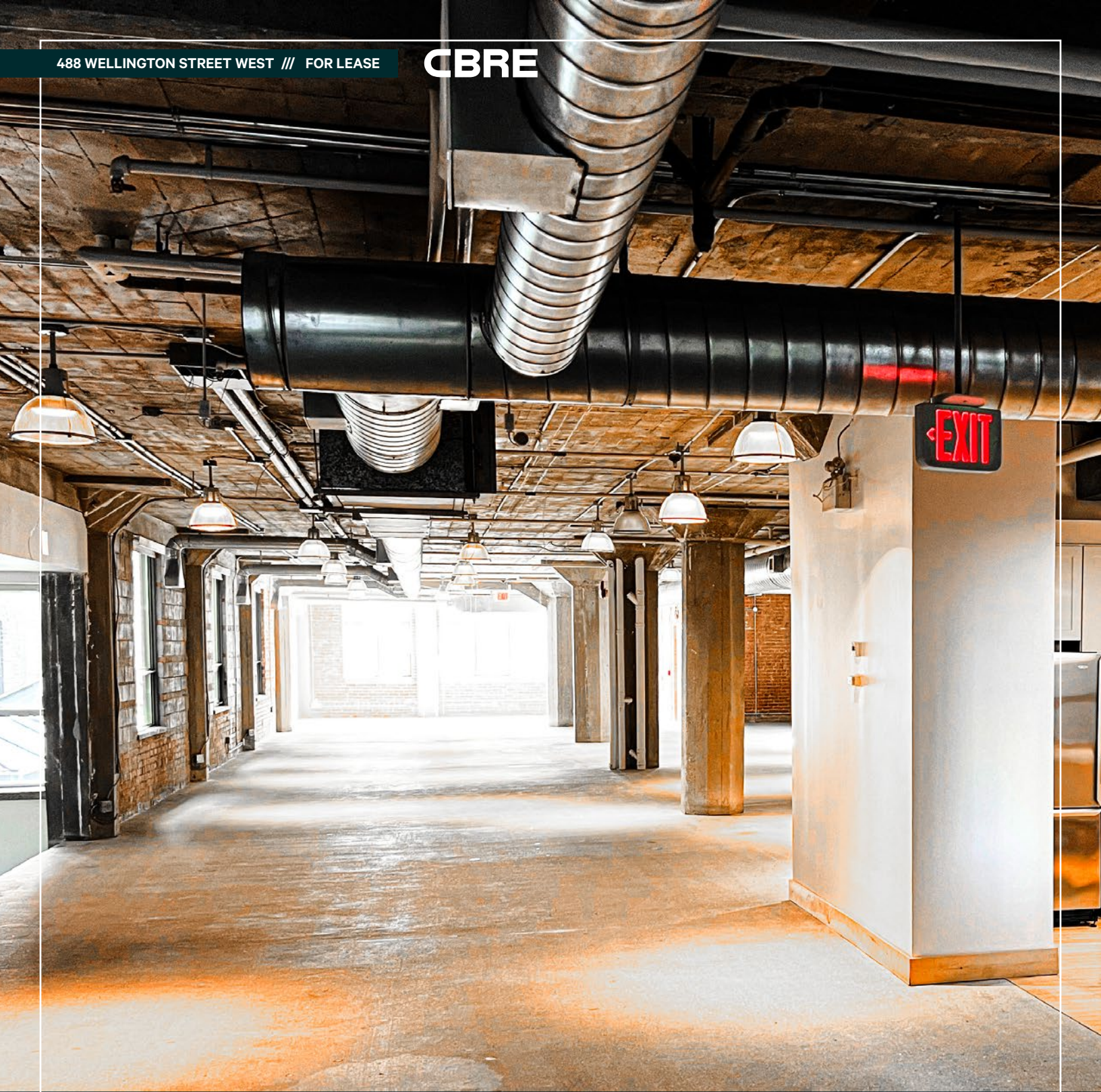
Available Immediately

Net Rent Contact Listing Agents

Additional Rent (2024 est.) \$16.50 per sq. ft.
(Hydro included, Janitorial excluded)

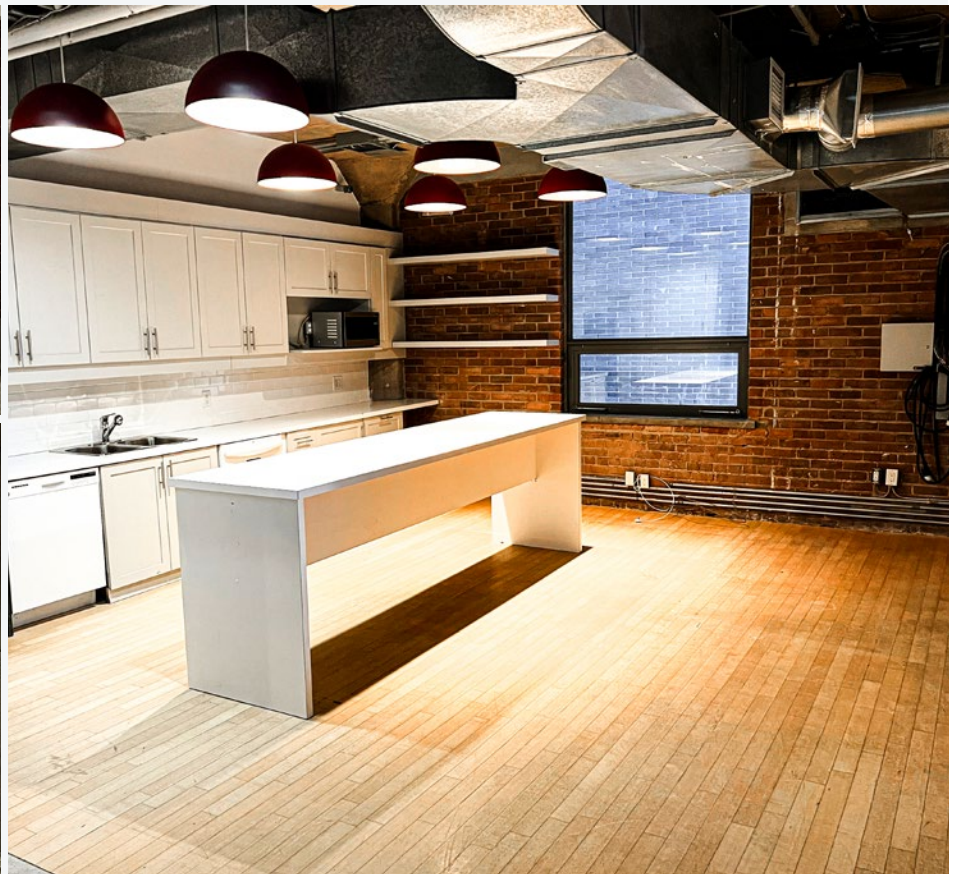
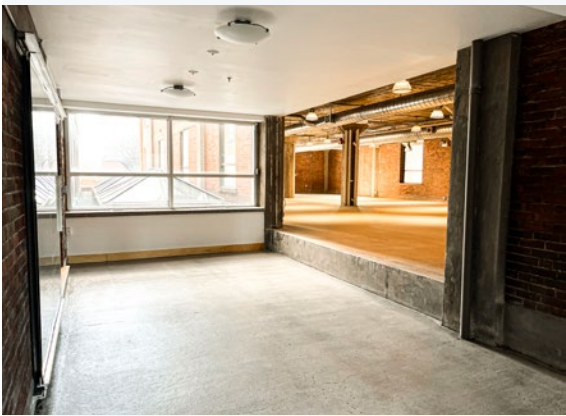
Term Flexible





Suite 200

- + Direct elevator access
- + Recently renovated
- + Built out with a kitchen and open plan.
Ready for tenant buildout.



Suite 200

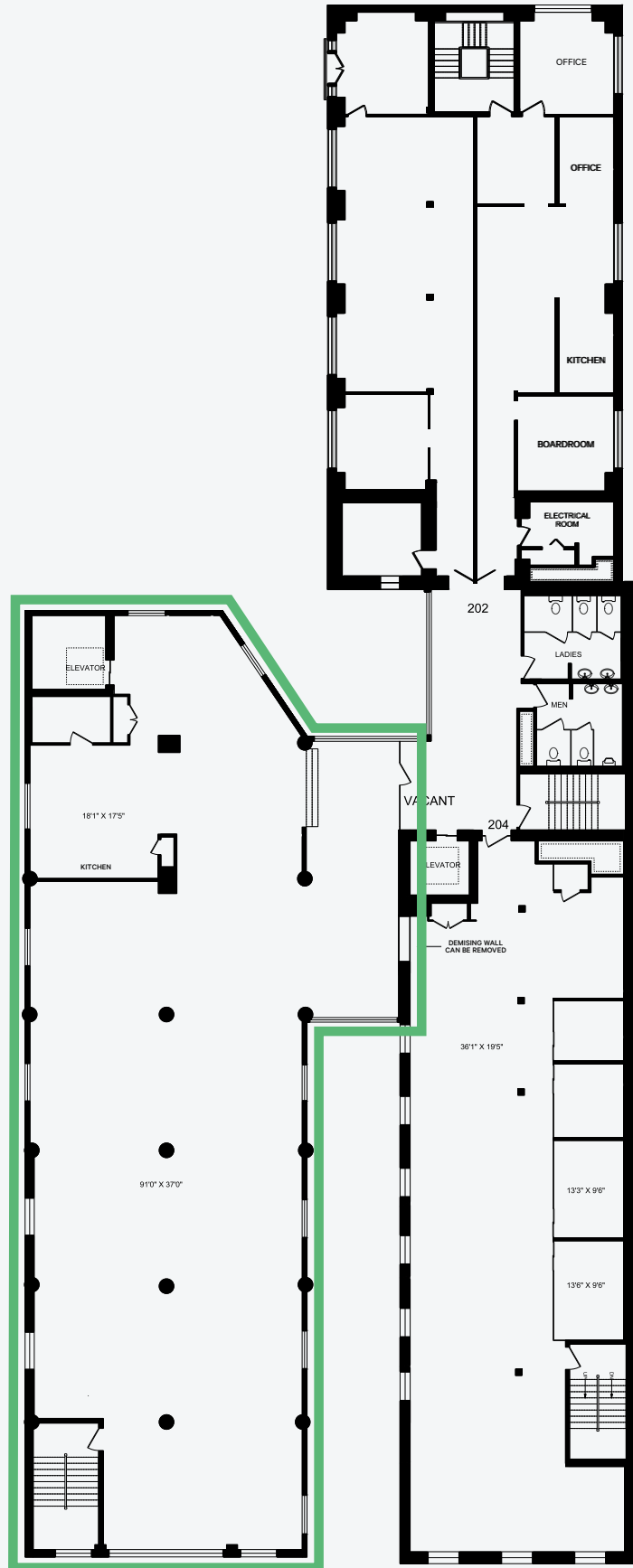
5,553 sq. ft.

Available Immediately

Net Rent Contact Listing Agents

Additional Rent (2024 est.) \$16.50 per sq. ft. (Hydro included, Janitorial excluded)

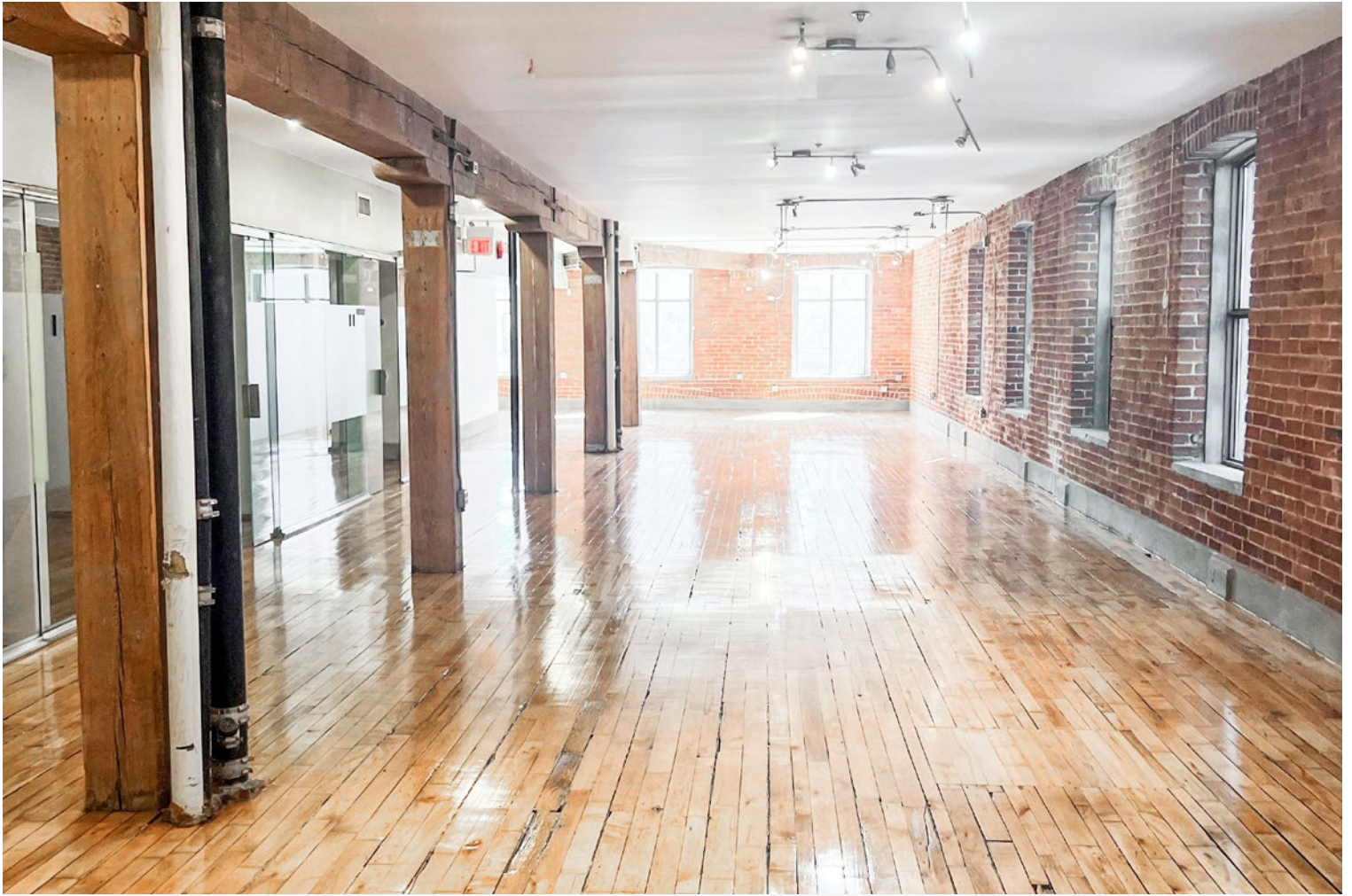
Term Flexible





Suite 204

- + Abundance of natural light
- + Recently renovated
- + Built out with 4 offices on glass
- + Contiguous with suite 200 for a total of 8,853 sq.ft.



Suite 204

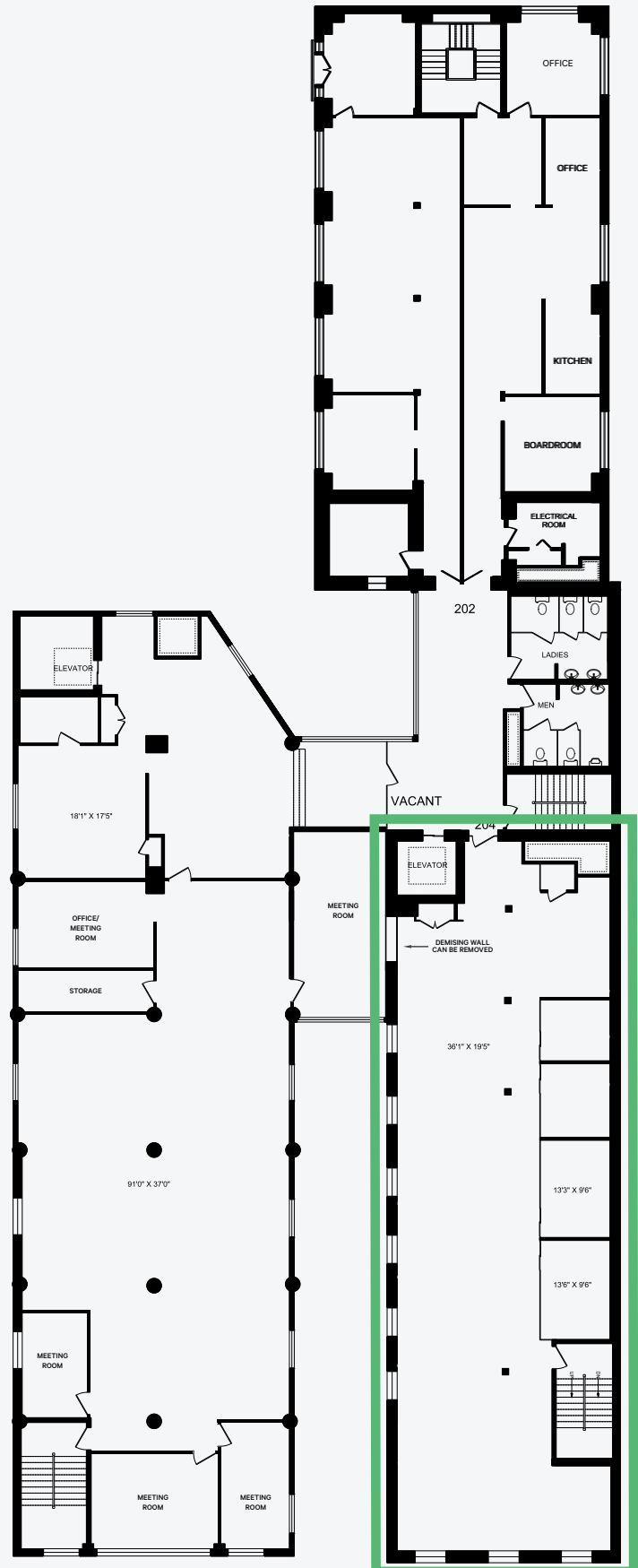
3,300 sq. ft.

Available Immediate

Net Rent Contact Listing Agents

Additional Rent (2024 est.) \$16.50 per sq. ft. (Hydro included, Janitorial excluded)

Term Flexible



Suite 202

- + Bright brick and beam space with windows on 3 sides
- + Built out with 4 offices, kitchen and open space
- + Suite is contiguous with unit 200 & 204 for a total of 11,427 sq.ft.
- + Space features a Juliet balcony



Suite 202

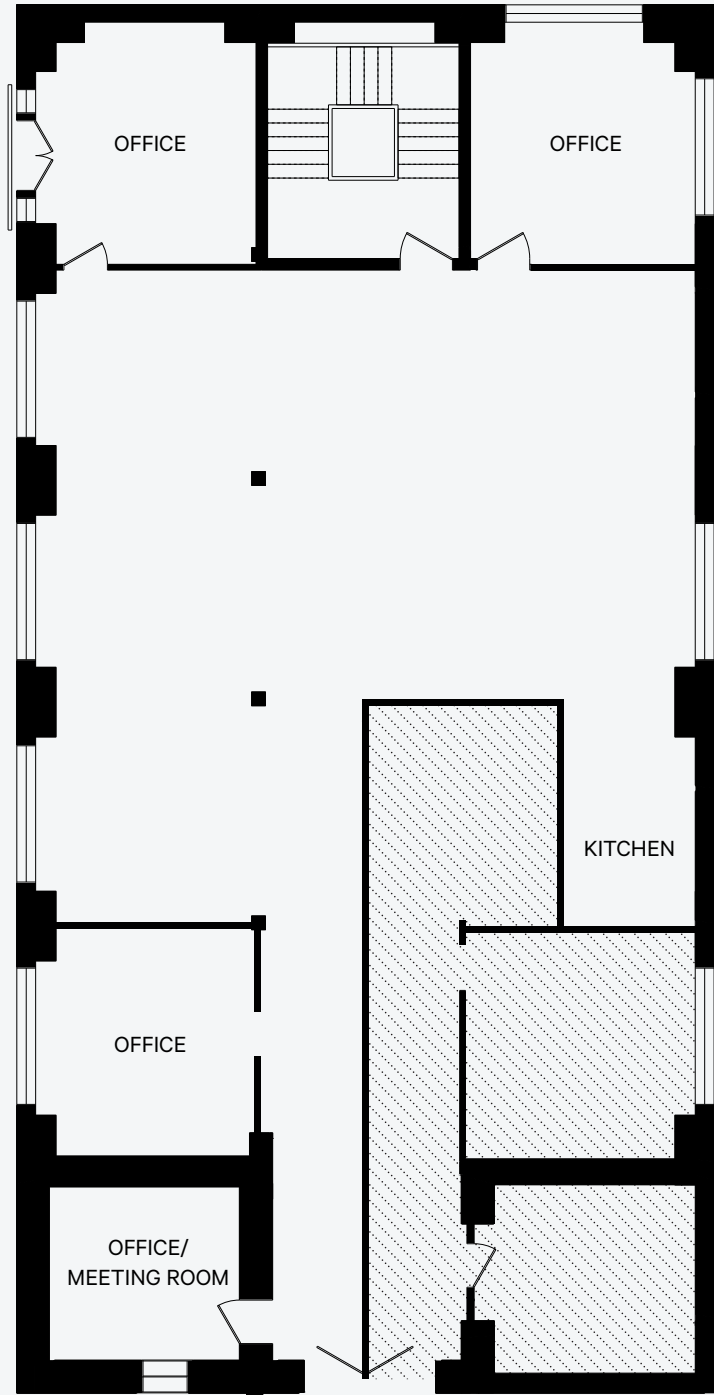
2,574 sq. ft.

Available Immediately

Net Rent Contact Listing Agents

Additional Rent (2024 est.) \$16.50 per sq. ft. (Hydro included, Janitorial excluded)

Term Flexible





Ground Floor

- + Beautiful creative brick and beam space in the heart of downtown west
- + Space caters perfectly to tech/creative groups
- + Ground floor and partially lower level (windows on all sides)



Ground Floor

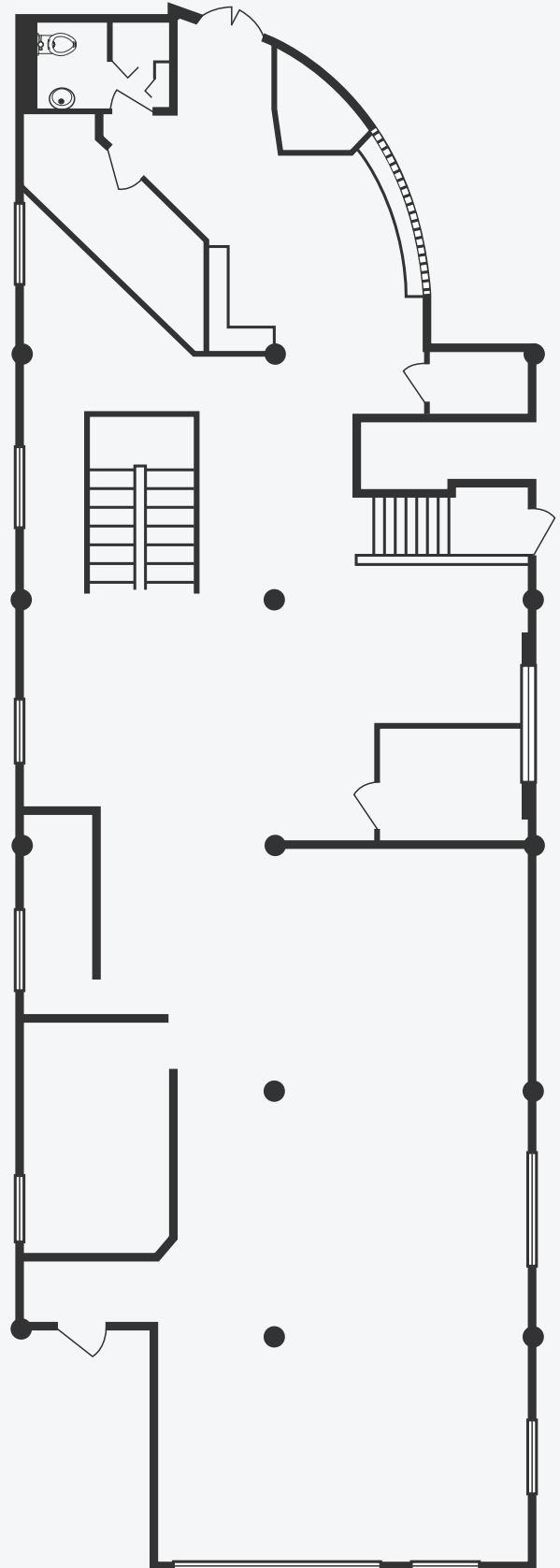
4,118 sq. ft.

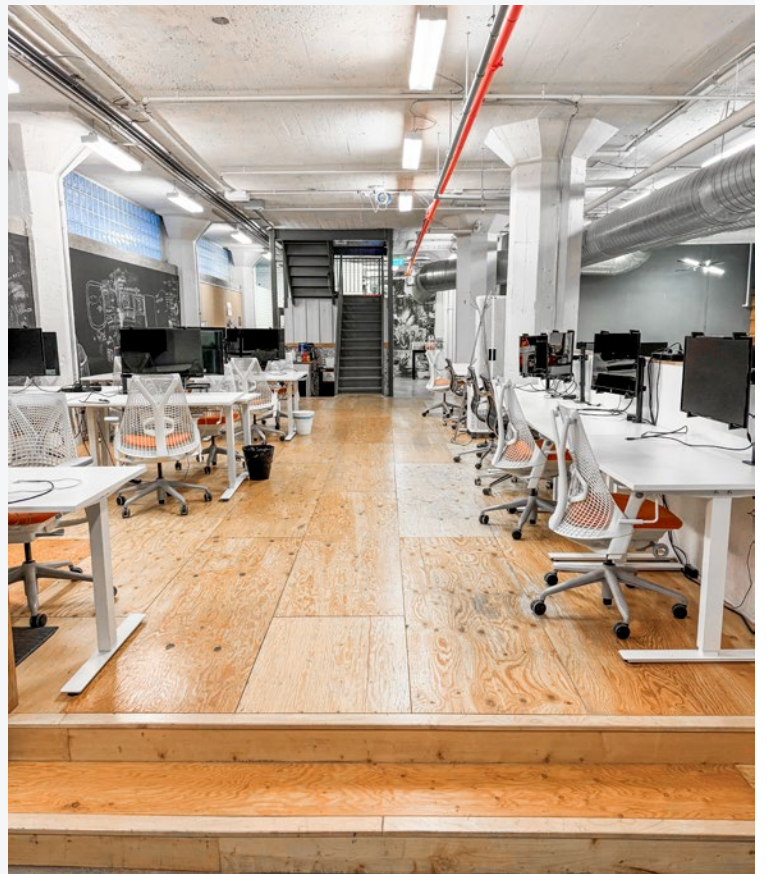
Available December 1, 2024

Net Rent Contact Listing Agents

Additional Rent (2024 est.) \$16.50 per sq. ft. (Hydro included, in-suite janitorial excluded)

Term Flexible





Lower Level

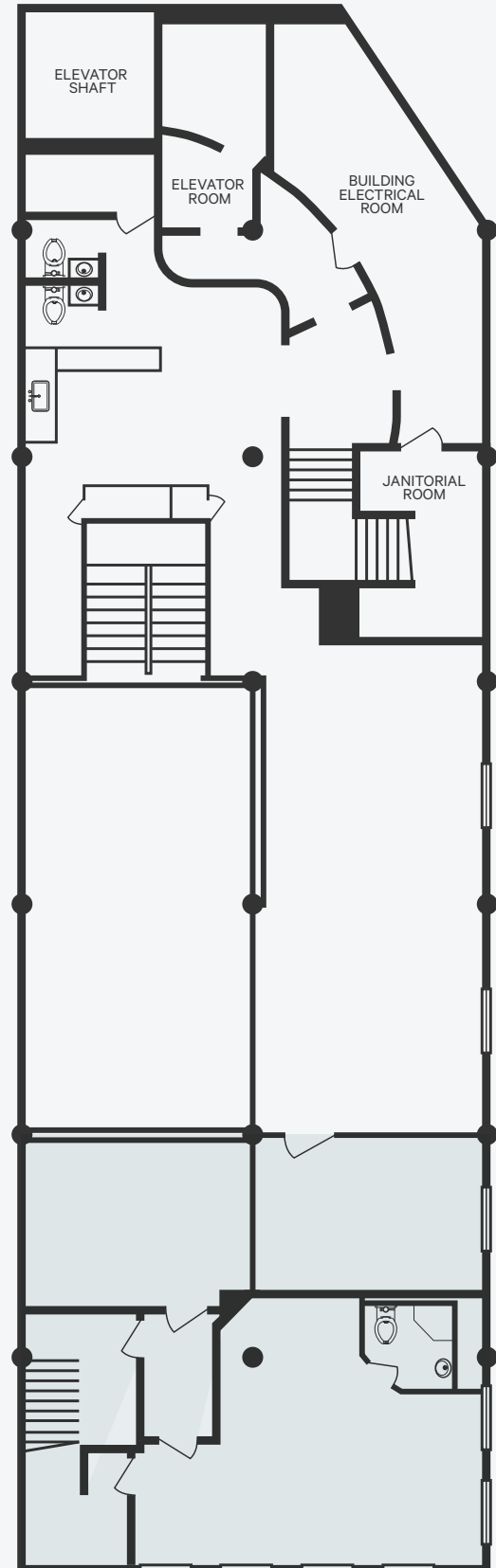
2,416 sq. ft.

Available December 1, 2024

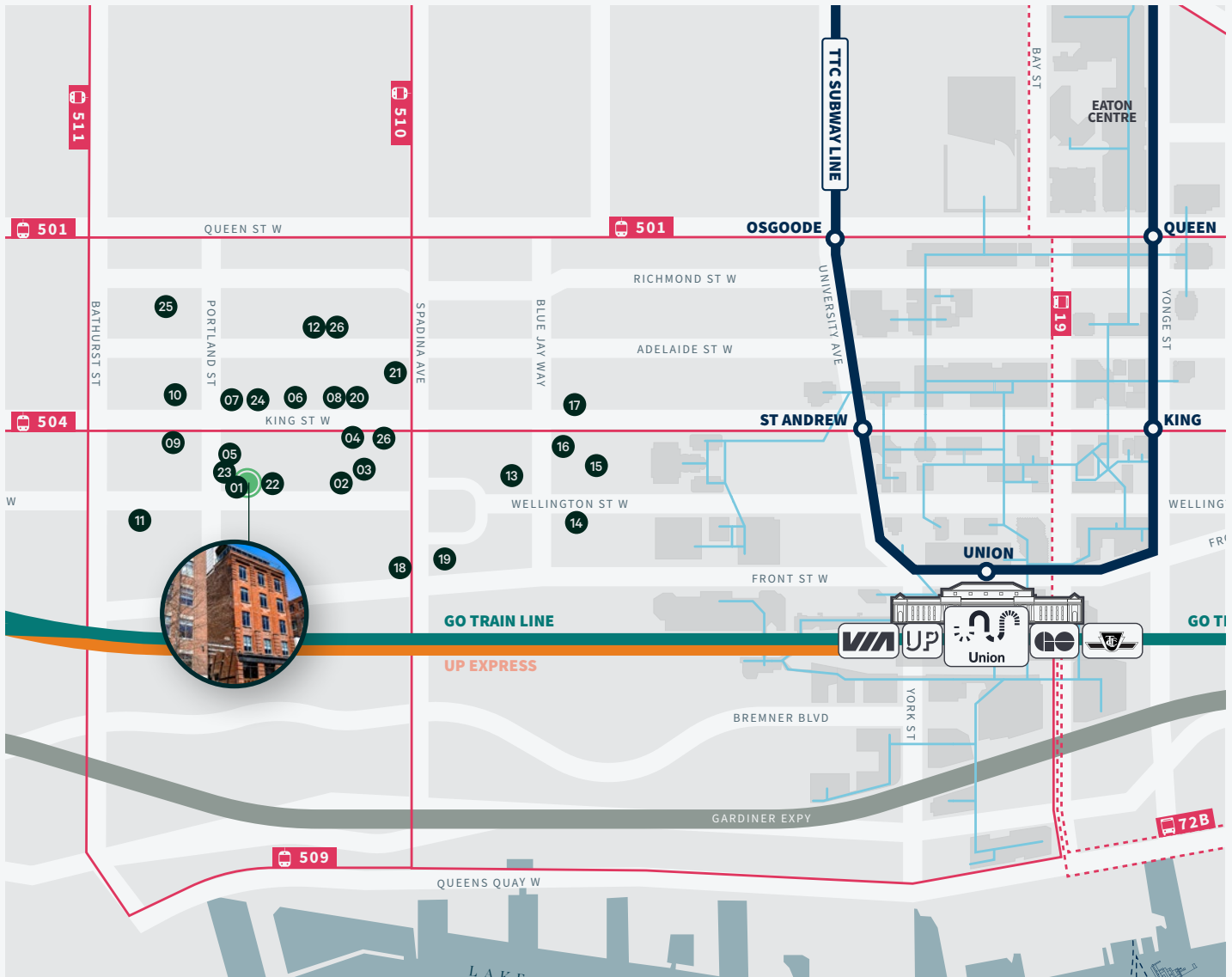
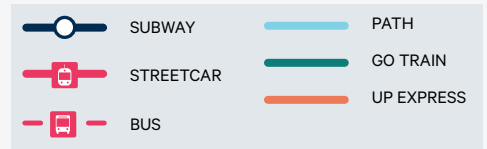
Net Rent Contact Listing Agents

Additional Rent (2024 est.) \$16.50 per sq. ft. (Hydro included, in-suite janitorial excluded)

Term Flexible



Amenities



FOOD & DRINKS

1. Marben
2. Mira
3. Xango
4. Baro
Rodney's Oyster House
Marbl
SOMA Chocolate Maker
Rabbit! Rabbit! Rabbit!
5. Shook
6. Belfast Love
Wilbur Mexicana
Jacobs & Co. Steakhouse

7. Anejo
8. Patria
Pink Sky Toronto
Myth
9. Ruby Soho
Forno Cultura
Starbucks
Lavelle
10. Vela
Ascari
DASHA
Buca Osteria & Enoteca
The Parlour
Lapinou

HOTELS

11. 1 Hotel Toronto
 12. Ace Hotel
 13. Bisha Hotel
The Soho Hotel
 14. Residence Inn by Marriott
 15. Le Germain Hotel
 16. King Blue Hotel
 17. Hyatt Hotel
- SHOPPING & ENTERTAINMENT**
18. The Well
 19. LCBO

20. Patagonia Sportswear
Call Her Juliet
21. Dollarama
Homesense
22. Herman Miller
Contemporary Office
Interiors

FITNESS

23. F45 Training
23. Elle Fitness
24. GoodLife Fitness
25. Barre3
26. Totum Life Science



488 WELLINGTON STREET WEST

TORONTO, ONTARIO

DANIEL GEIST*

Sales Associate
+1 416 874 7265
daniel.geist@cbre.com

*Sales Representative

CBRE Limited | Real Estate Brokerage | 145 King Street West, Suite 1100 | Toronto, Ontario Canada, M5H 1J8 | +1 416 362 2244 | www.cbre.ca

This disclaimer shall apply to CBRE Limited, Real Estate Brokerage, and to all other divisions of the Corporation; to include all employees and independent contractors ("CBRE"). The information set out herein, including, without limitation, any projections, images, opinions, assumptions and estimates obtained from third parties (the "Information") has not been verified by CBRE, and CBRE does not represent, warrant or guarantee the accuracy, correctness and completeness of the Information. CBRE does not accept or assume any responsibility or liability, direct or consequential, for the Information or the recipient's reliance upon the Information. The recipient of the Information should take such steps as the recipient may deem necessary to verify the Information prior to placing any reliance upon the Information. The Information may change and any property described in the Information may be withdrawn from the market at any time without notice or obligation to the recipient from CBRE. CBRE and the CBRE logo are the service marks of CBRE Limited and/or its affiliated or related companies in other countries. All other marks displayed on this document are the property of their respective owners. All Rights Reserved.

